



www.novamaquina.com



[nova_maquina](https://www.instagram.com/nova_maquina)



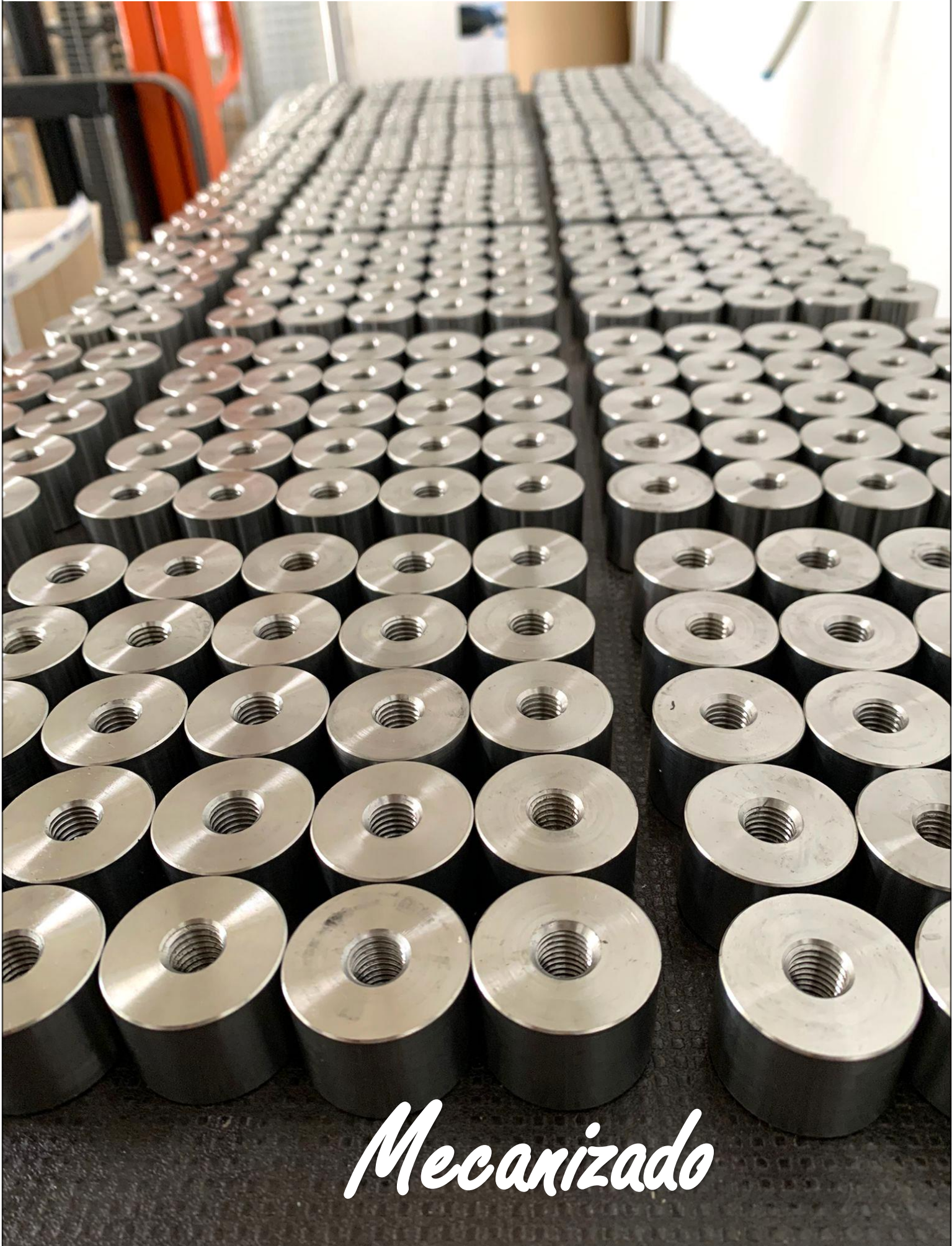
Catálogo de servicios

NOVA MAQUINA

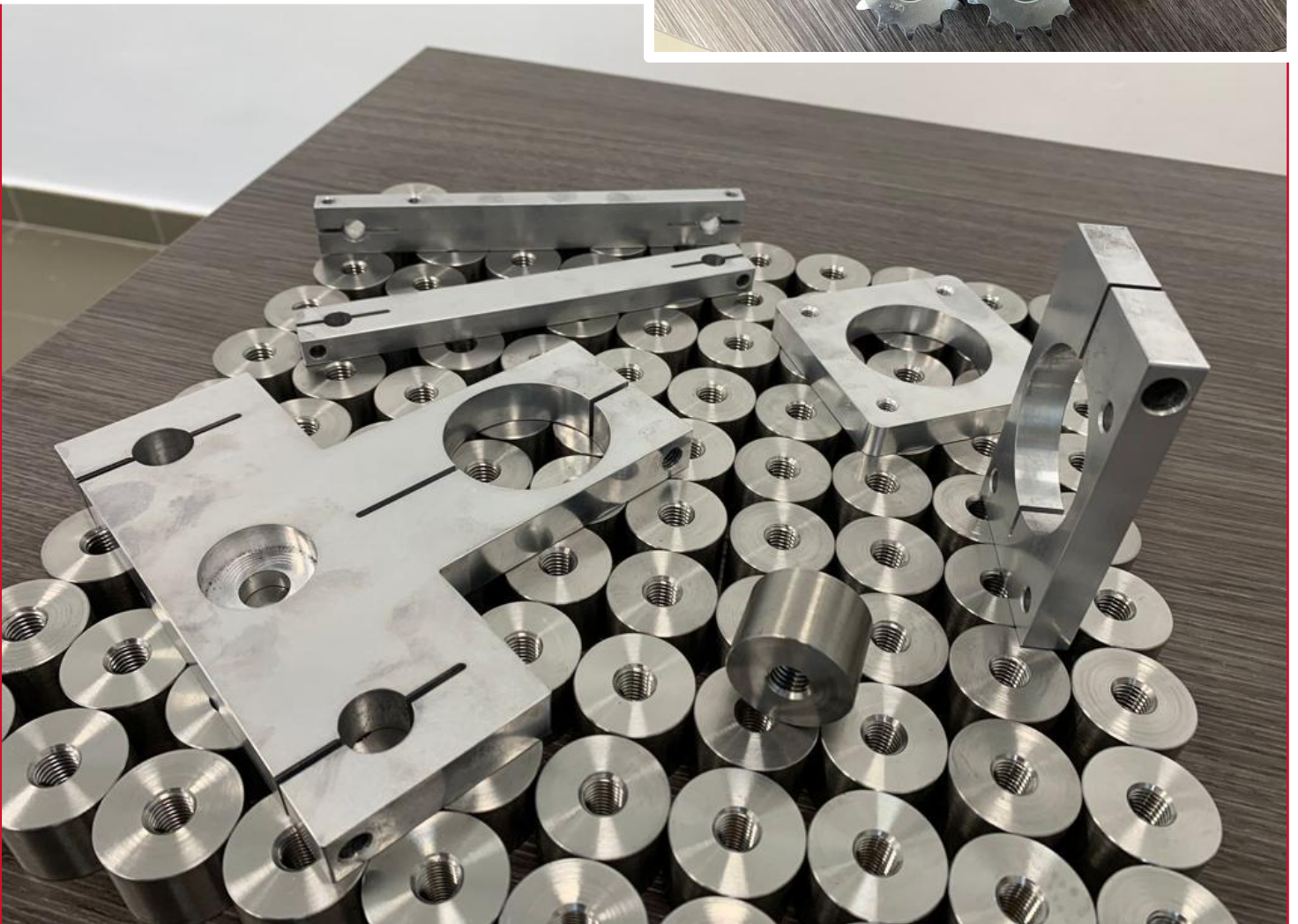
Dpto. Técnico-Comercial: 667 236 308
a.fernandez@novamaquina.com

Dpto. Ingeniería Mecánica: 679 453 406
f.molina@novamaquina.com

Info@novamaquina.com



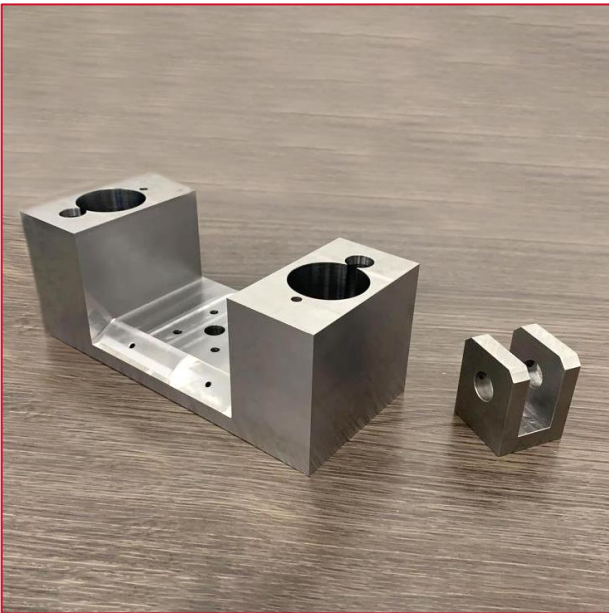
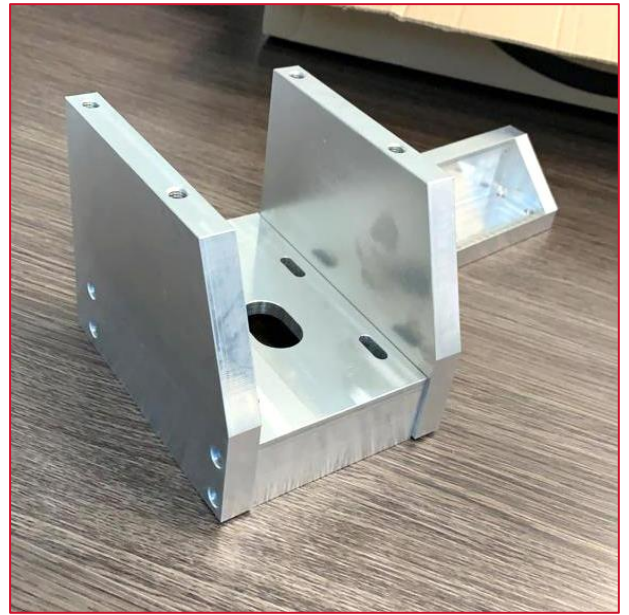
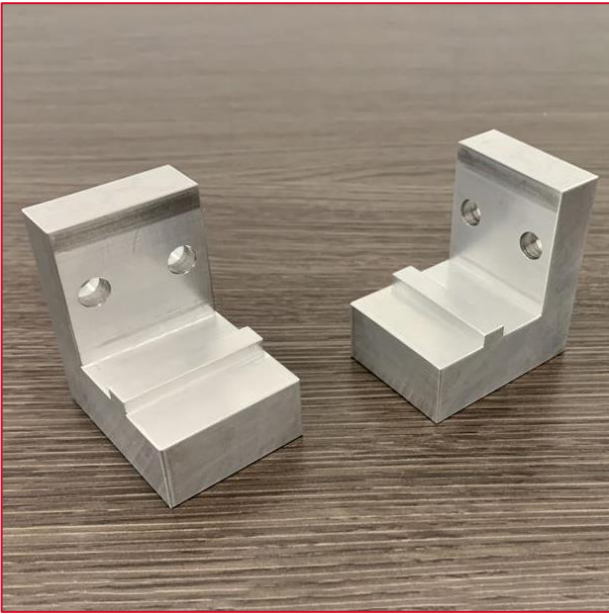
Mecanizado

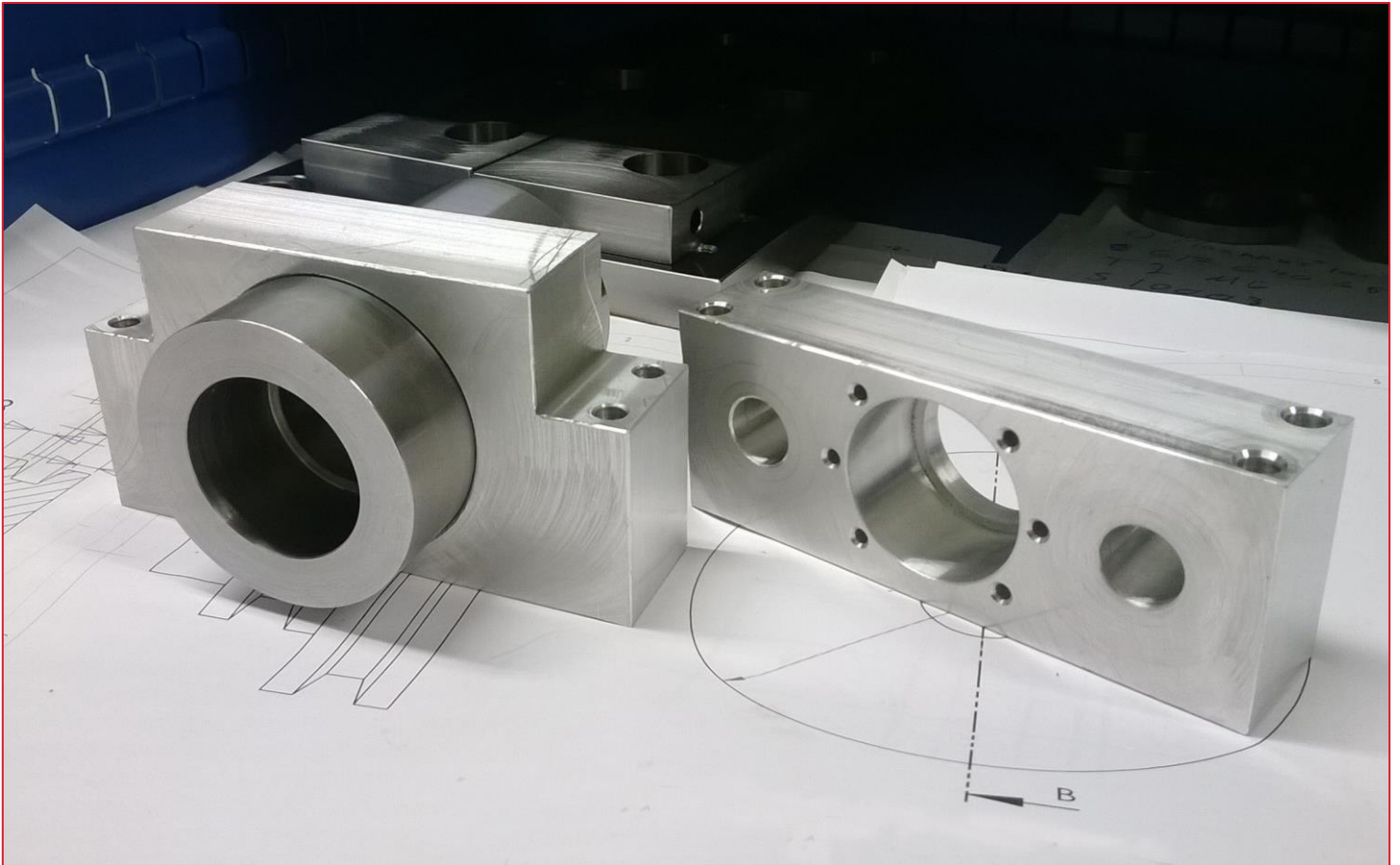






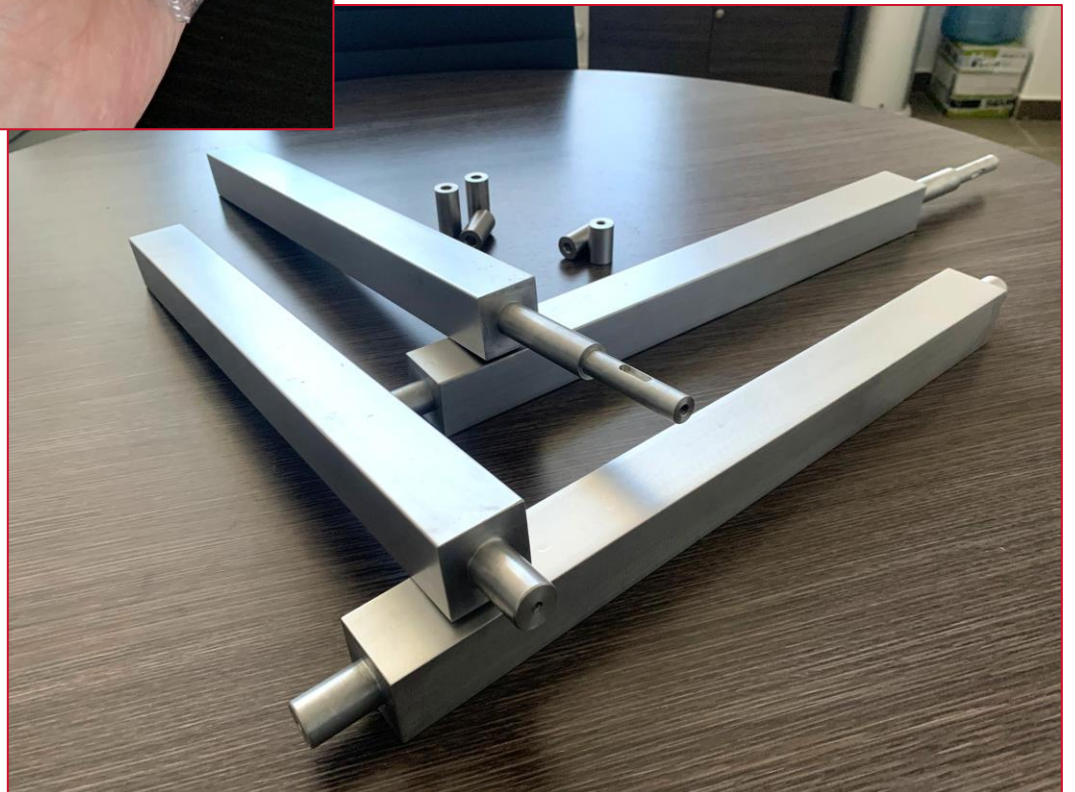
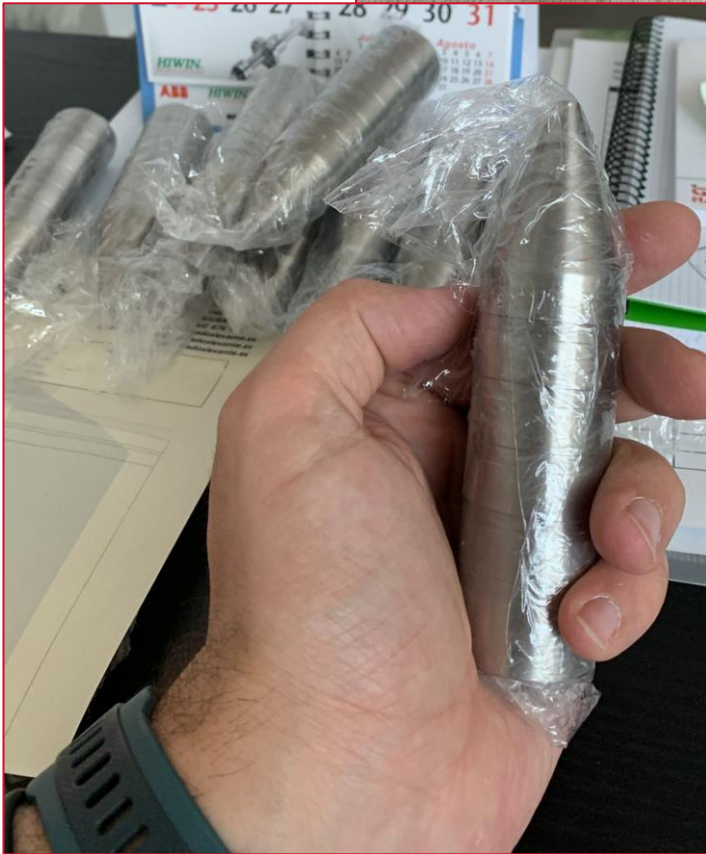


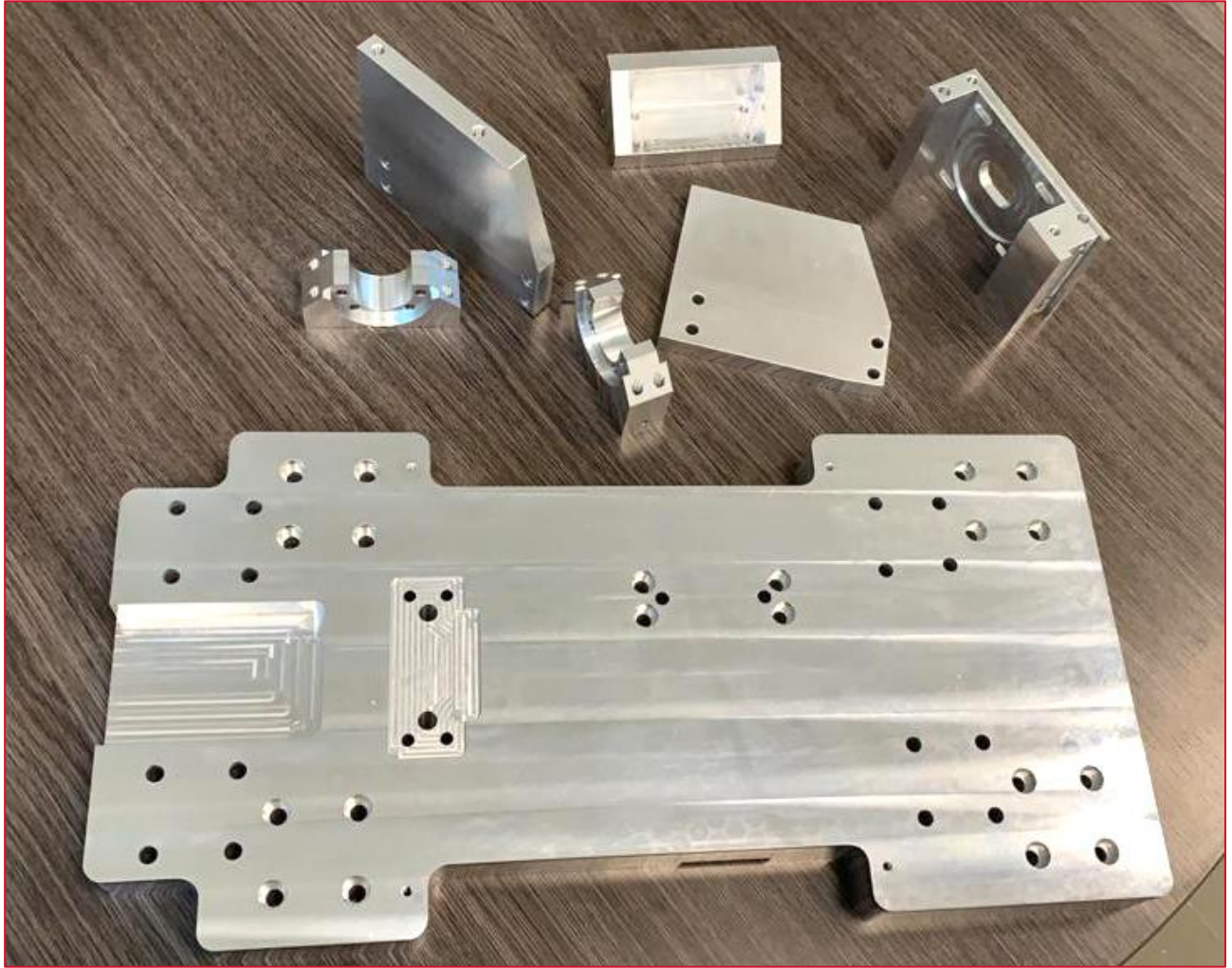












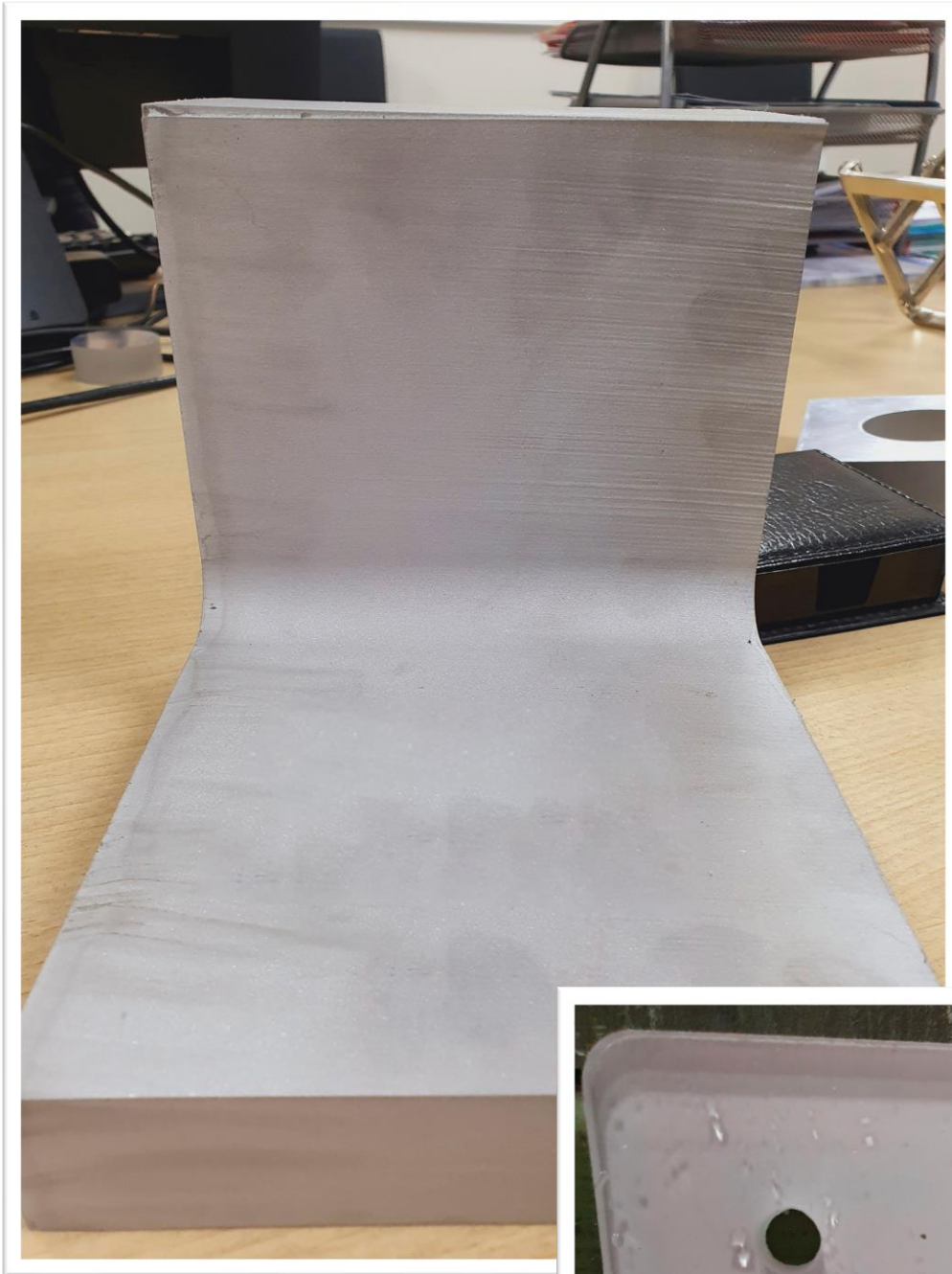


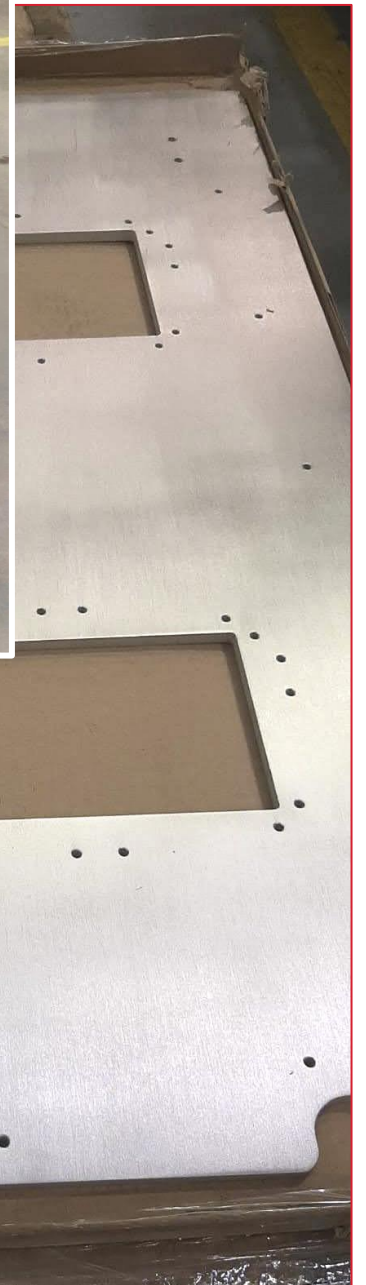
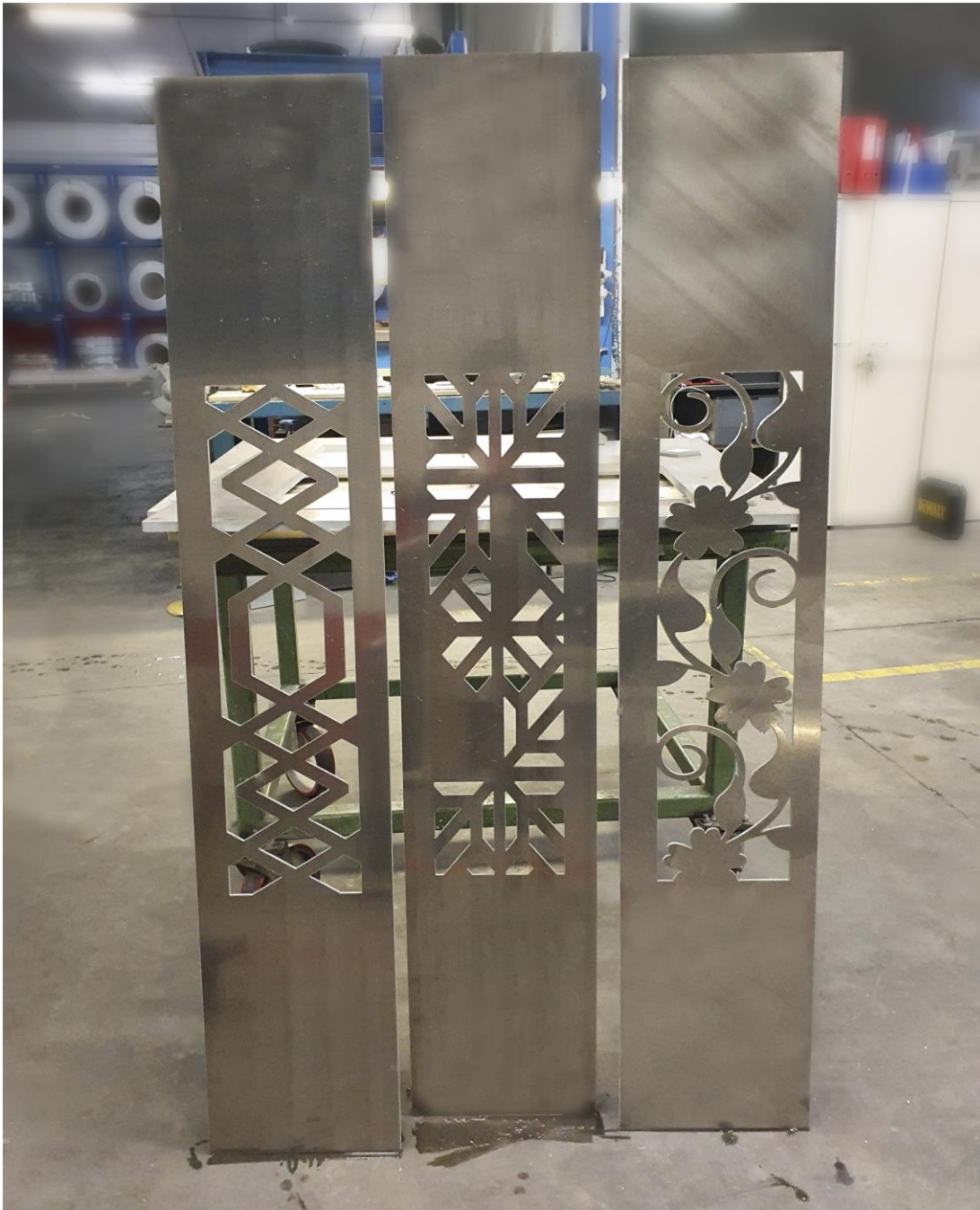
Corte al agua de metal









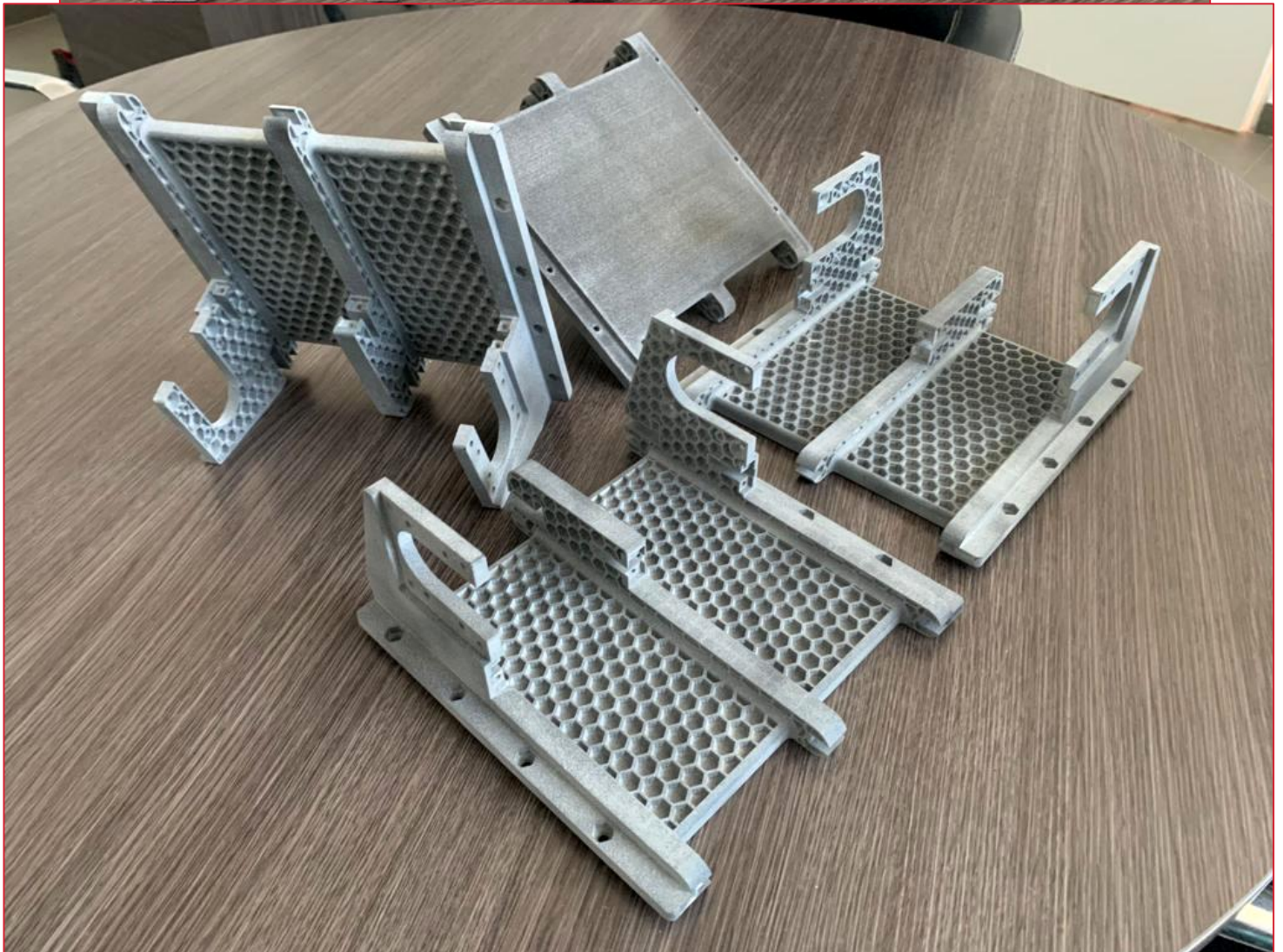
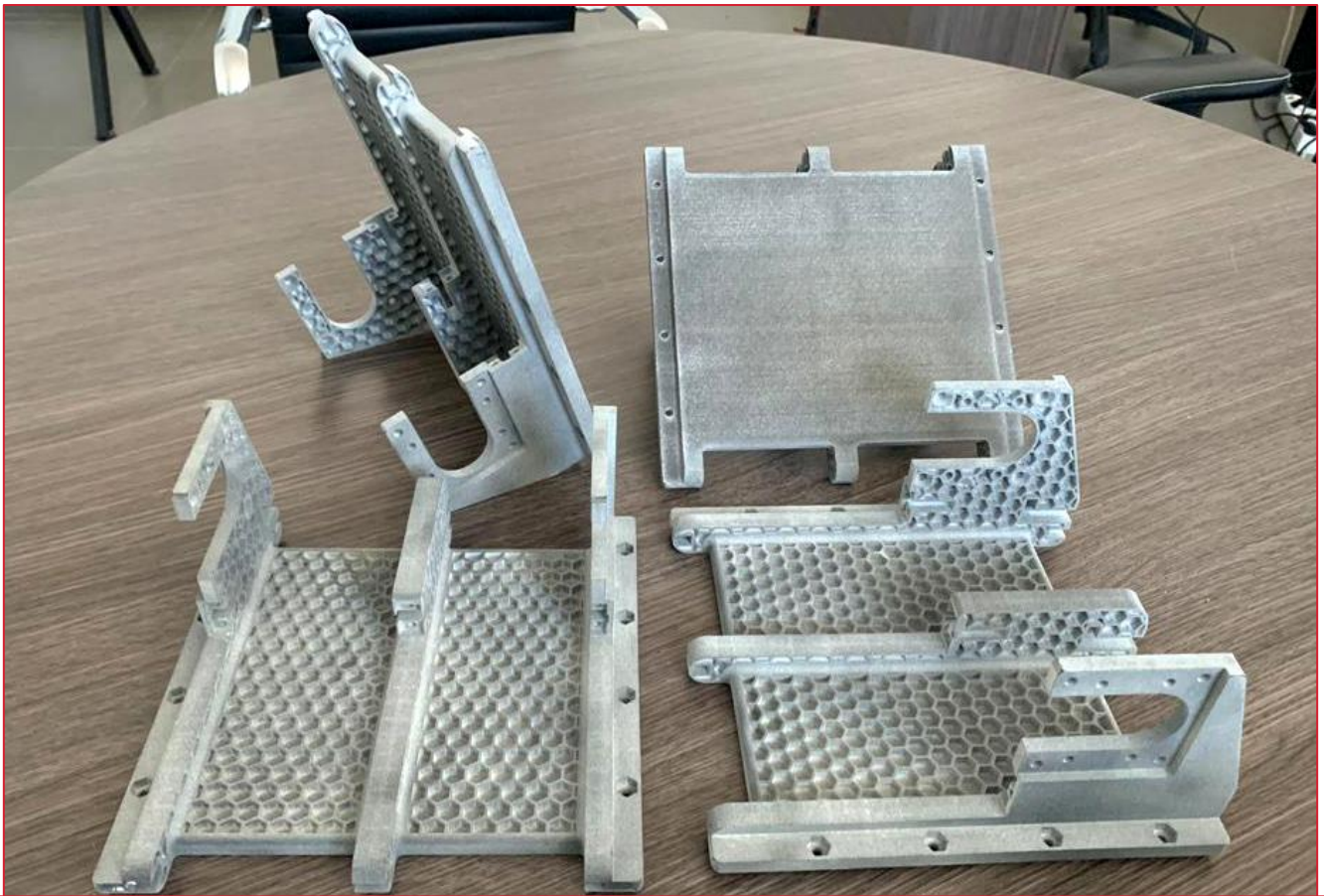


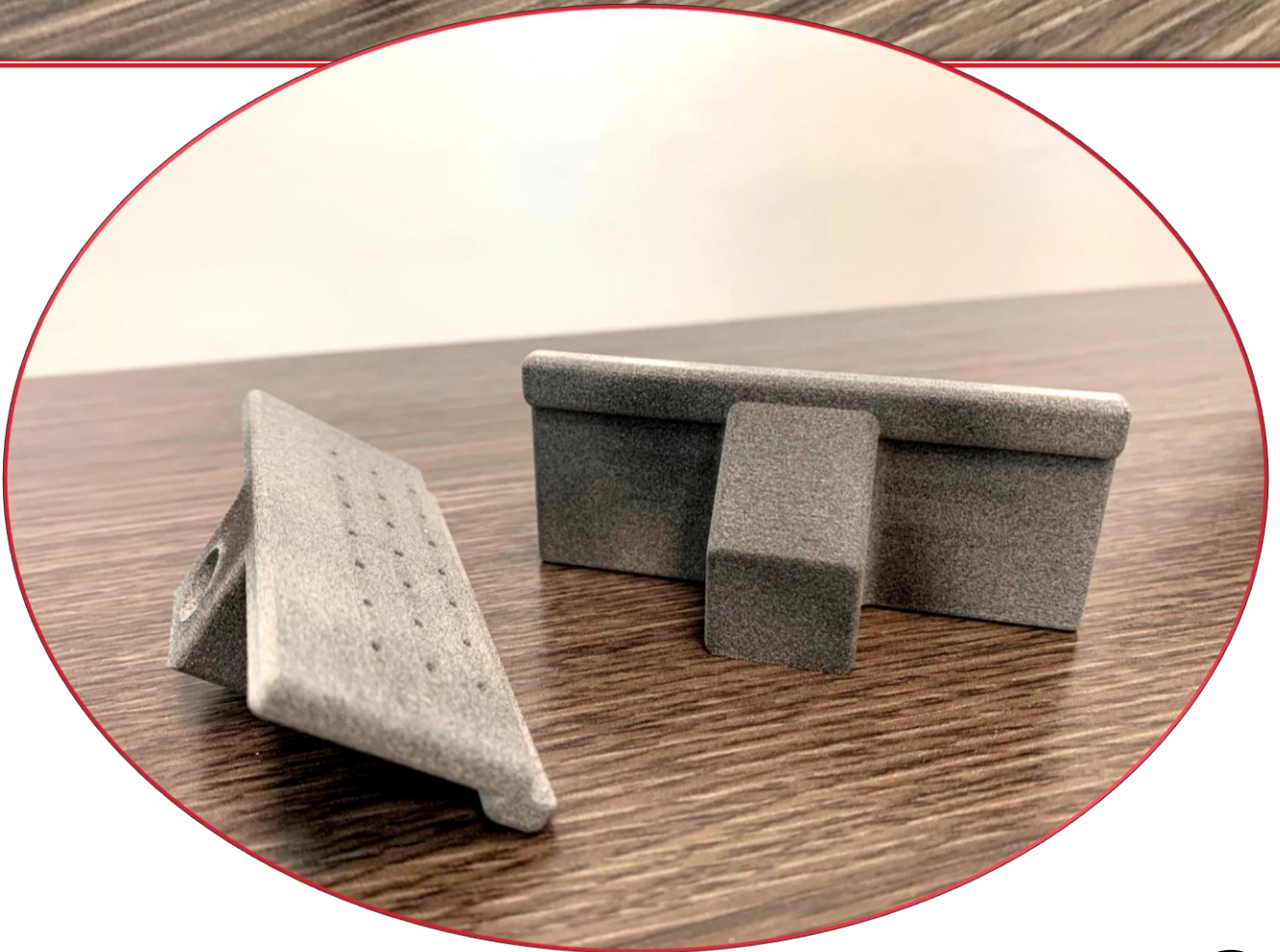
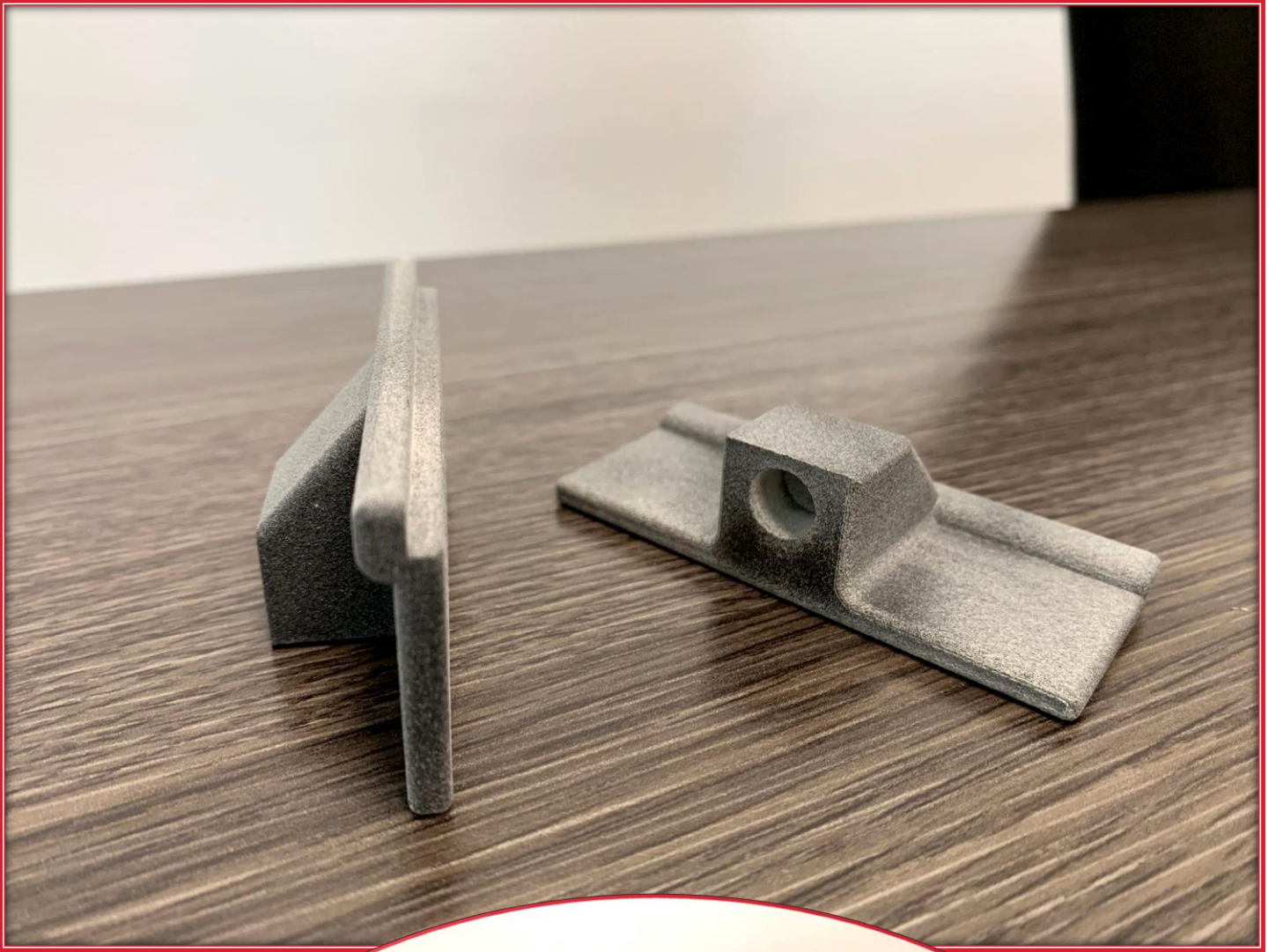
Impresión 3D





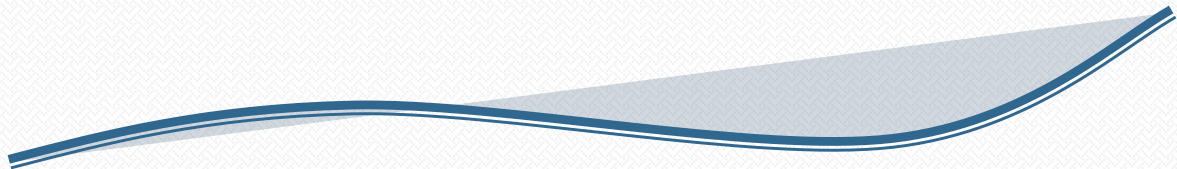












Dpto. Técnico-Comercial: 667 236 308
a.fernandez@novamaquina.com

Dpto. Ingeniería Mecánica: 679 453 406
f.molina@novamaquina.com

Info@novamaquina.com

Parque Científico y Tecnológico GEOLIT
Edificio CTSA 2, planta sótano S3.7 y
S3.8
23620 MENGIBAR (Jaén)